



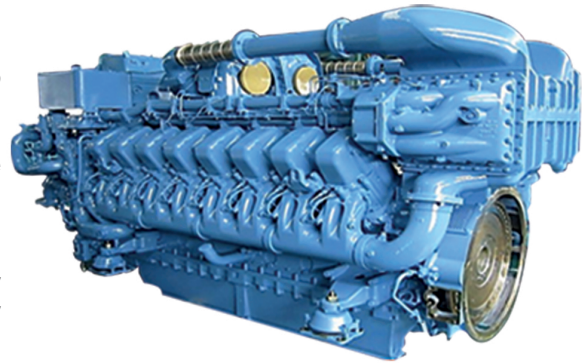
## Marine Diesel Engine BMI 3000



### DESCRIPTION

The BMI 3000 marine engine is a compact and turbo charged engine that has good power to weight ratio and has the lowest weight among all engines of this range. It also has a high durability, good efficiency, low noise and low maintenance costs, which makes it suitable for a wider range of applications.

BMI 3000 marine engine is designed and manufactured through changing the use of rail diesel engine by considering all marine standards for medium and heavy duty vessels.



### SPECIFICATIONS

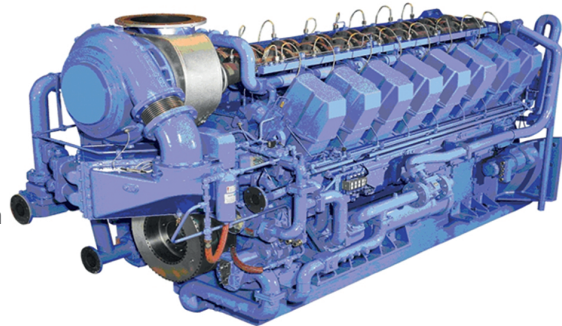
TYPE	Marine Diesel Engine BMI 3000
Dimesnsion(L×W×H)	3685 × 1530 × 2120 mm
Nominal Power	3400 (hp)
Maximum Torque	13530 (N.m)
Maximum Speed	1800 (rpm)
Engine Dry Weight	8630 (Kg)
Cylinder Number	16 Cylinder

## Marine Diesel Engine BMI 4000

### DESCRIPTION

The BMI 4000 marine engine is categorized in heavy duty engines in marine application. The base engine is RK 215 rail diesel one which is designed and manufactured considering all marine standards for heavy duty marine vessels.

To achieve propeller curve, the engine power is in medium speed. The unique features of this engine are the constant torque at different operating speeds and optimum performance in bad ambient conditions.



### SPECIFICATIONS

TYPE	Marine Diesel Engine BMI 4000
Dimesnsion(L×W×H)	5575 × 2173 × 2816 mm
Nominal Power	4250 (hp)
Engine Type	4 stroke
Engine Speed	1050 (rpm)
Engine Dry Weight	20300 (Kg)